

Lynden School District

XXXXX - Repurposing of Lynden Middle School

516 Main St, Lynden, WA 98264

KING ARCHITECTURE

401 HARRIS AVE STE 100 BELLINGHAM WA 98225 PHONE: 1.360.647.5464 EMAIL: david@king-architecture.com

**ARCHITECT
CIVIL ENGINEER
STRUCTURAL ENGINEER
MECHANICAL ENGINEER
ELECTRICAL ENGINEER**

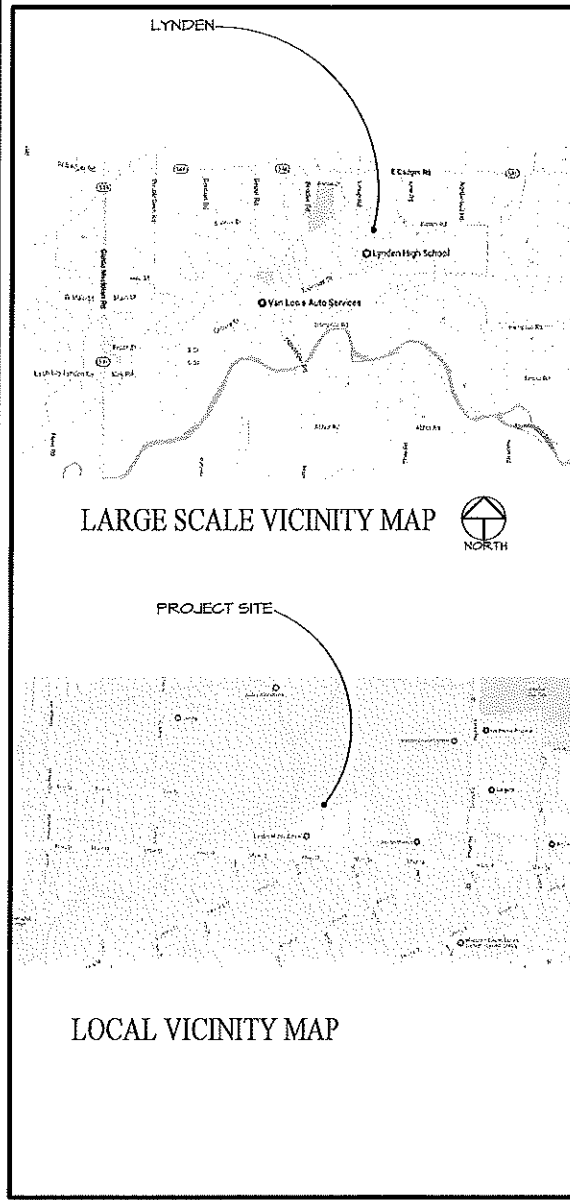


KING ARCHITECTURE LLC
401 HARRIS AVENUE, SUITE 100
BELLINGHAM, WA 98225
360.647.5464
www.king-architecture.com

King Architecture LLC is not responsible for safety programs, methods and procedures of operations, or the construction of the design shown on these drawings. Drawings are for use on this project only and are not intended for reuse without written approval. Drawings are not to be used in any manner that would constitute a detriment or liability directly or indirectly to King Architecture.

© COPYRIGHT 2011
If this drawing image is less than 22 1/2" x 34 1/16", it has been reduced and must be scaled accordingly. Contractor shall verify and be responsible for all dimensions and conditions on the job. King Architecture is to be notified of any variations from the dimensions and conditions shown on the drawings, or discrepancies found within the drawings. Shop drawings, etc., are to be submitted to King Architecture for review prior to fabrication and/or installation.

VICINITY MAPS



DRAWING INDEX

SK	SITE MAP
000	GENERAL
A0.9	Cover
040	ARCHITECTURAL
A1.1	SITE PLAN
A1.2	MAIN FLOOR DEMO PLAN
A2.10	MAIN FLOOR PLAN
A2.11	MAIN FLOOR PLAN
A2.11a	Unnamed
A2.12	MAIN FLOOR PLAN
A2.1B	MAIN FLOOR PLAN
A2.20	MAIN FLOOR CALLOUTS
A6.1	INTERIOR ELEVATIONS

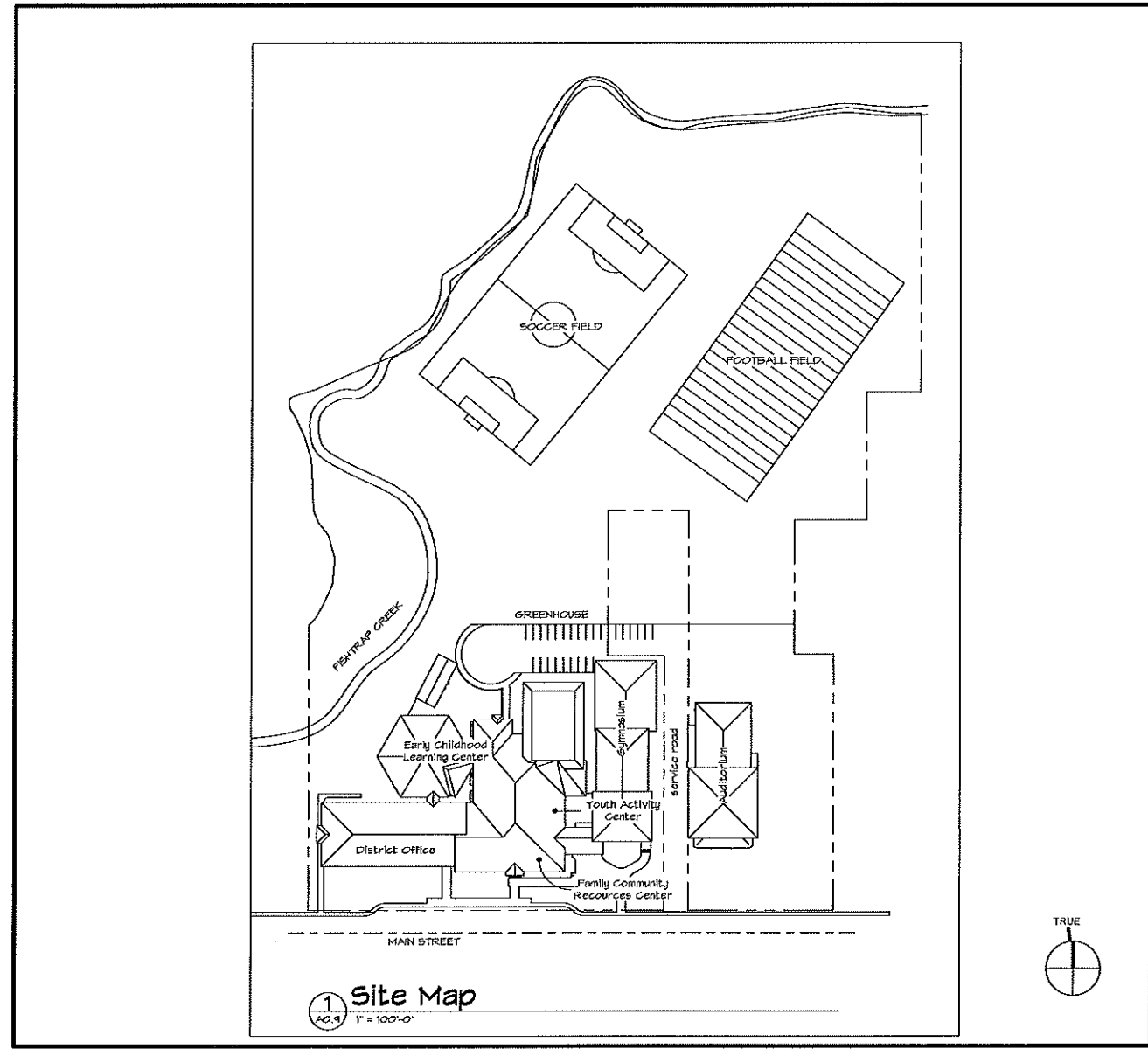
GENERAL PROJECT NOTES

- VISIT JOB SITE PRIOR TO BIDDING TO VERIFY EXISTING CONDITIONS, THE LAYOUT AND EXTENT OF THE AREAS WITH LISTED MATERIALS IN PLACE, AND THE AREAS SCHEDULED FOR RENOVATION.
- CONTRACTOR TO RESTORE/REPAIR ANY DAMAGE TO THE EXISTING SITE.
- PROVIDE BIDDER DESIGN ELECTRICAL WORK TO REMOVE AND RE-INSTALL DEVICES SHOWN ON THE PLAN. CONTRACTOR TO COORDINATE WITH THE SCHOOL DISTRICT PRIOR TO AND AFTER DEVICES ARE DISCONNECTED AND RECONNECTED.
- SEAL ALL SURFACE AND MATERIAL JOINTS, PENETRATIONS, AND TRANSITIONS
- PROVIDE SECURE AND WEATHER-TIGHT STORAGE FOR MATERIALS.
- AT COMPLETION OF PROJECT AND THROUGH-OUT THE CONSTRUCTION PHASE, CLEAN WORK AND WORK AREA, REMOVING EXCESS UNUSED MATERIALS, CONSTRUCTION SCRAP, DIRT, MARKS AND SMEARS ON SURFACES, TOOLS AND EQUIPMENT USED ON THE PROJECT, INCLUDING BARRIERS AND SIGNAGE.
- KEEP PROJECT LOCATION CLEAN, PROVIDE FREQUENT TRASH REMOVAL AND CONFINE CONSTRUCTION TO THE IMMEDIATE WORK AREA.
- AT COMPLETION OF PROJECT LEAVE A SMALL AMOUNT OF MAINTENANCE AND PATCHING FINISH MATERIAL IN A LOCATION ON SITE AS DIRECTED BY THE OWNER.
- DISPOSE OF REMOVED ITEMS AND MATERIALS AT COUNTY APPROVED DISPOSAL SITE. SALVAGE AND RETURN TO OWNER ANY ITEMS OR MATERIALS OWNER REQUESTS. RE-USE ITEMS IN GOOD CONDITION AS APPROVED BY OWNER. REMOVE ITEMS NOT SALVAGED TO DISPOSAL LOCATION OR FROM SITE AS APPROVED BY OWNER.
- INCLUDE THE FOLLOWING REQUIREMENTS IN PROJECT DOCUMENTS: (1) SUBMIT AIR BARRIER TEST REPORT TO JURISDICTION ONCE TEST IS COMPLETED; (2) IF TEST RESULTS EXCEED 0.4 CFM/FT² AT 0.3 IN. W.G., THEN VISUALLY INSPECT AIR BARRIER AND SEAL NOTED SOURCES OF LEAKAGE; (3) SUBMIT A FOLLOW-UP REPORT TO JURISDICTION NOTING CORRECTIVE MEASURES TAKEN; (4) INCLUDE AIR BARRIER TEST REPORT IN COMPLIANCE DOCUMENTATION PROVIDED BY OWNER.

ALTERNATES

--	--

SITE MAP



Lynden School District

XXXXX - Repurposing of Lynden Middle School

DD
17 NOV 17

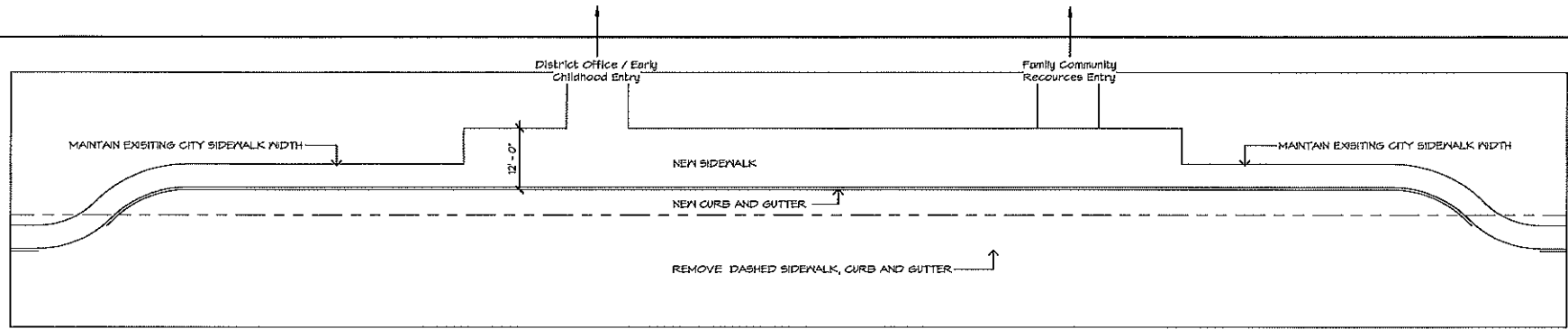
ISSUE:
DATE ISSUED:

REVISIONS		
NO	DATE	ISSUE

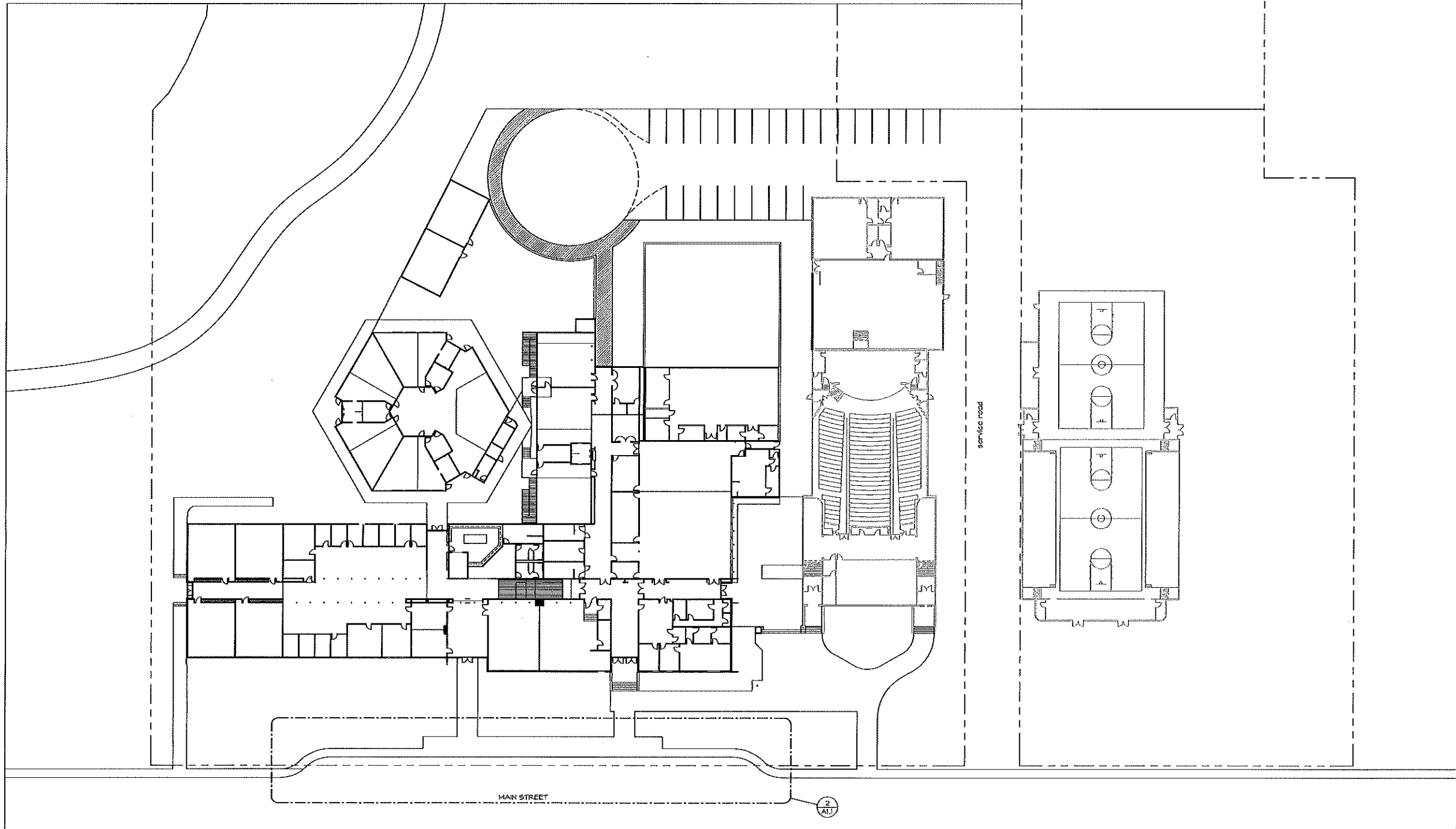
Cover

PROJECT NO: XXXXX
SCALE: As indicated
DRAWN BY: RWP
FILE: Lynden School Repurposing of Lynden Middle School

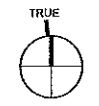
A0.9



2 BUS TURNOUT
A1.1 1" = 100'



1 site plan
A1.1 1" = 30'-0"



OKING
ARCHITECTURE

KING ARCHITECTURE LLC
401 HARRIS AVENUE, SUITE 400
BELLINGHAM, WA 98225
360.847.5484
karch@king-architecture.com

King Architecture LLC is not responsible for safety programs, methods and procedures of operations, or the construction of the design shown on these drawings. Drawings are for use on this project only and are not intended for reuse without written approval. Drawings are not to be used in any manner that would constitute a detriment or liability directly or indirectly to King Architecture.
© COPYRIGHT 2017
If this drawing image is less than 22 1/2" x 34 7/16", it has been reduced and must be scaled accordingly. Contractor shall verify and be responsible for all dimensions and conditions on the job. King Architecture is to be notified of any variations from the dimensions and conditions shown on the drawings, or discrepancies found within the drawings. Shop drawings, etc., are to be submitted to King Architecture for review prior to fabrication and/or installation.



Lynden School District

XXXXX -
Repurposing of
Lynden Middle
School

DD
17 NOV 17

ISSUE:
DATE ISSUED:

REVISIONS		
NO.	DATE	ISSUE

SITE PLAN

PROJECT NO: XXXXX
SCALE: As indicated
DRAWN BY: RWP
FILE: F:\proj\04\0402\04020000\04020000.dwg

A1.1

King Architecture LLC is not responsible for safety programs, methods and procedures of operations, or the construction of the design shown on these drawings. Drawings are for use on this project only and are not intended for reuse without written approval. Drawings are not to be used in any manner that would constitute a detriment or liability directly or indirectly to King Architecture.
© COPYRIGHT 2017
If this drawing image is less than 22 1/2" x 34 1/16", it has been reduced and must be scaled accordingly. Contractor shall verify and be responsible for all dimensions and conditions on the job. King Architecture is to be notified of any variations from the dimensions and conditions shown on the drawings, or discrepancies found within the drawings, shop drawings, etc., are to be submitted to King Architecture for review prior to fabrication and/or installation.



Lynden School District

XXXXX -
Repurposing of
Lynden Middle
School

DD
17 NOV 17

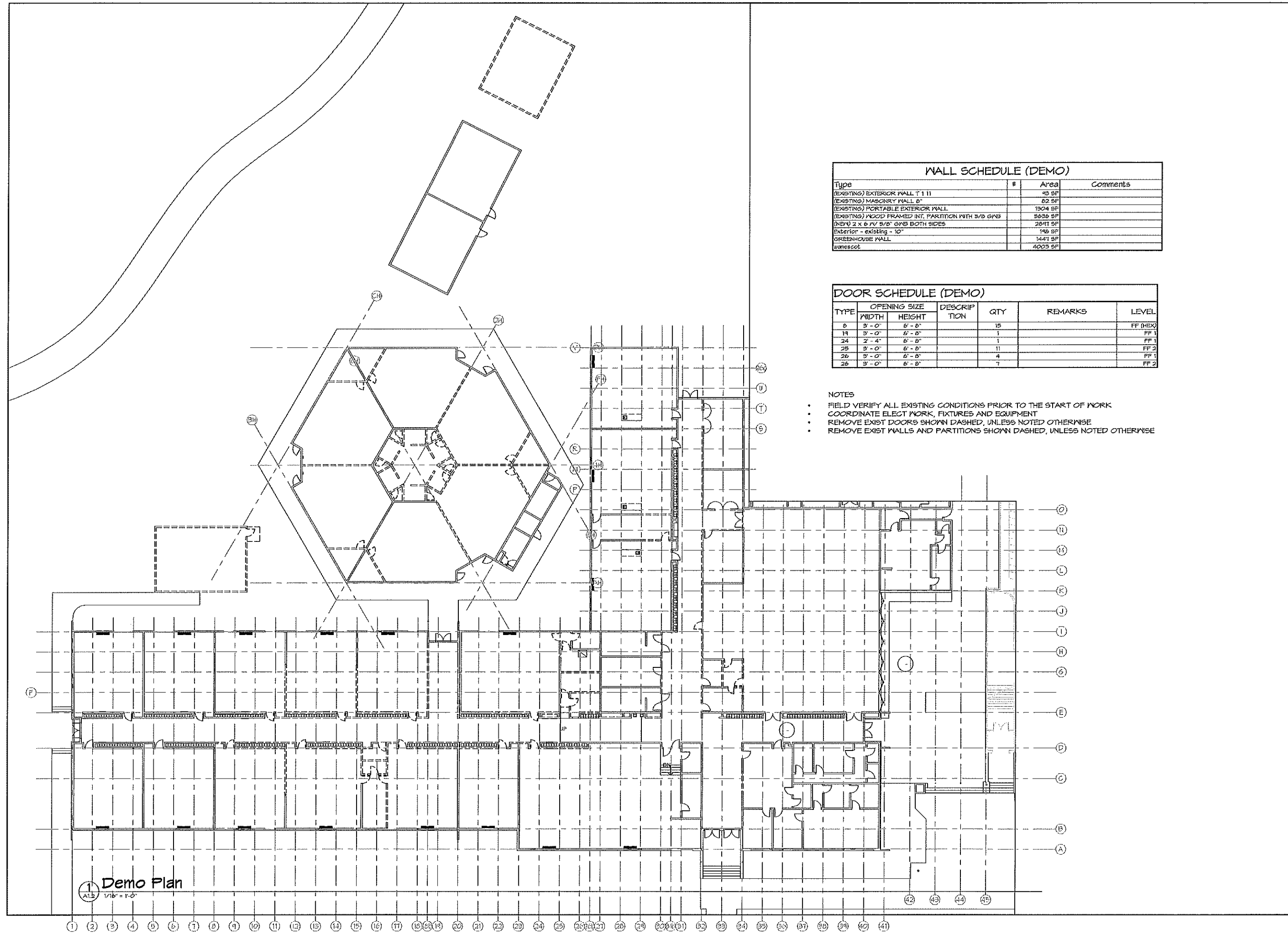
ISSUE:
DATE ISSUED:

REVISIONS		
NO.	DATE	ISSUE

MAIN FLOOR
DEMO PLAN

PROJECT NO: XXXXX
SCALE: 1/16" = 1'-0"
DRAWN BY: Author
FILE: F:\Projects\School\Repurposing of Lynden Middle School\A1.2.dwg

A1.2



WALL SCHEDULE (DEMO)

Type	#	Area	Comments
(EXISTING) EXTERIOR WALL T 1 11		43 SF	
(EXISTING) MASONRY WALL 0"		82 SF	
(EXISTING) PORTABLE EXTERIOR WALL		1304 SF	
(EXISTING) WOOD FRAMED INT. PARTITION WITH 5/8 GNB		5636 SF	
(NEW) 2 x 6 W/ 5/8" GNB BOTH SIDES		2841 SF	
Exterior - existing - 10"		196 SF	
GREENHOUSE WALL		1441 SF	
Warescot		4005 SF	

DOOR SCHEDULE (DEMO)

TYPE	OPENING SIZE		DESCRIP TION	QTY	REMARKS	LEVEL
	WIDTH	HEIGHT				
8	3'-0"	6'-8"		15		FF (HEX)
14	3'-0"	6'-8"		1		FF 1
24	2'-4"	6'-8"		1		FF 1
25	3'-0"	6'-8"		11		FF 2
26	3'-0"	6'-8"		4		FF 1
28	3'-0"	6'-8"		7		FF 2

- NOTES
- FIELD VERIFY ALL EXISTING CONDITIONS PRIOR TO THE START OF WORK
 - COORDINATE ELECT WORK, FIXTURES AND EQUIPMENT
 - REMOVE EXIST DOORS SHOWN DASHED, UNLESS NOTED OTHERWISE
 - REMOVE EXIST WALLS AND PARTITIONS SHOWN DASHED, UNLESS NOTED OTHERWISE

King Architecture LLC is not responsible for safety programs, methods and procedures of operations, or the construction of the design shown on these drawings. Drawings are for use on this project only and are not intended for reuse without written approval. Drawings are not to be used in any manner that would constitute a detriment or liability directly or indirectly to King Architecture.
© COPYRIGHT 2011
If this drawing image is less than 22 1/2" x 34 7/16", it has been reduced and must be scaled accordingly. Contractor shall verify and be responsible for all dimensions and conditions on the job. King Architecture is to be notified of any variations from the dimensions and conditions shown on the drawings, or discrepancies found within the drawings, shop drawings, etc., are to be submitted to King Architecture for review prior to fabrication and/or installation.



Lynden School District

XXXXX -
Repurposing of
Lynden Middle
School

DD
17 NOV 17

ISSUE:
DATE ISSUED:

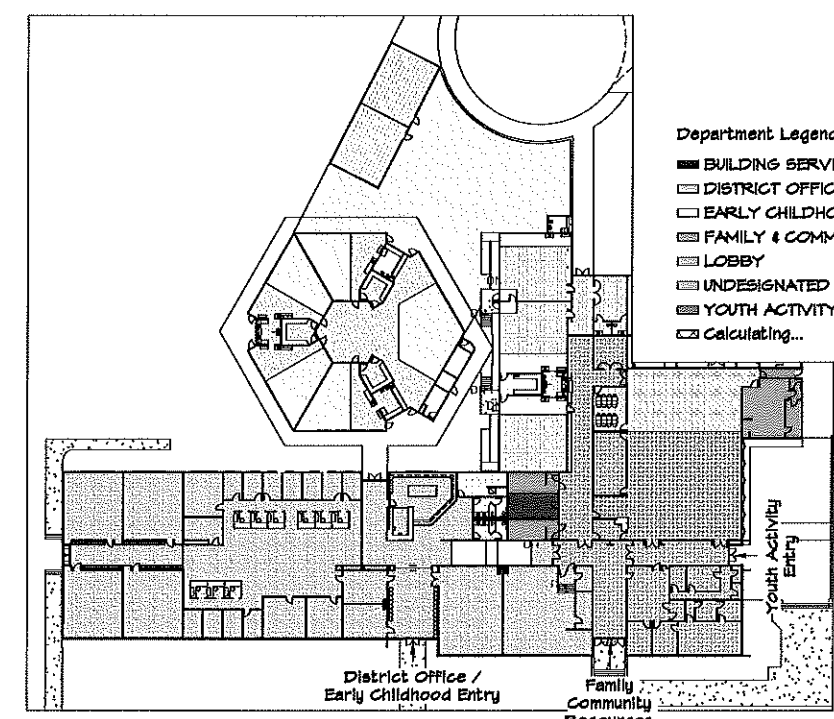
REVISIONS		
NO	DATE	ISSUE

MAIN FLOOR PLAN

PROJECT NO: XXXXX
SCALE: As Indicated
DRAWN BY: RWP
FILE: P:\XXXX\School Repurposing at Lynden Middle School\Main Floor Plan.dwg

A2.10

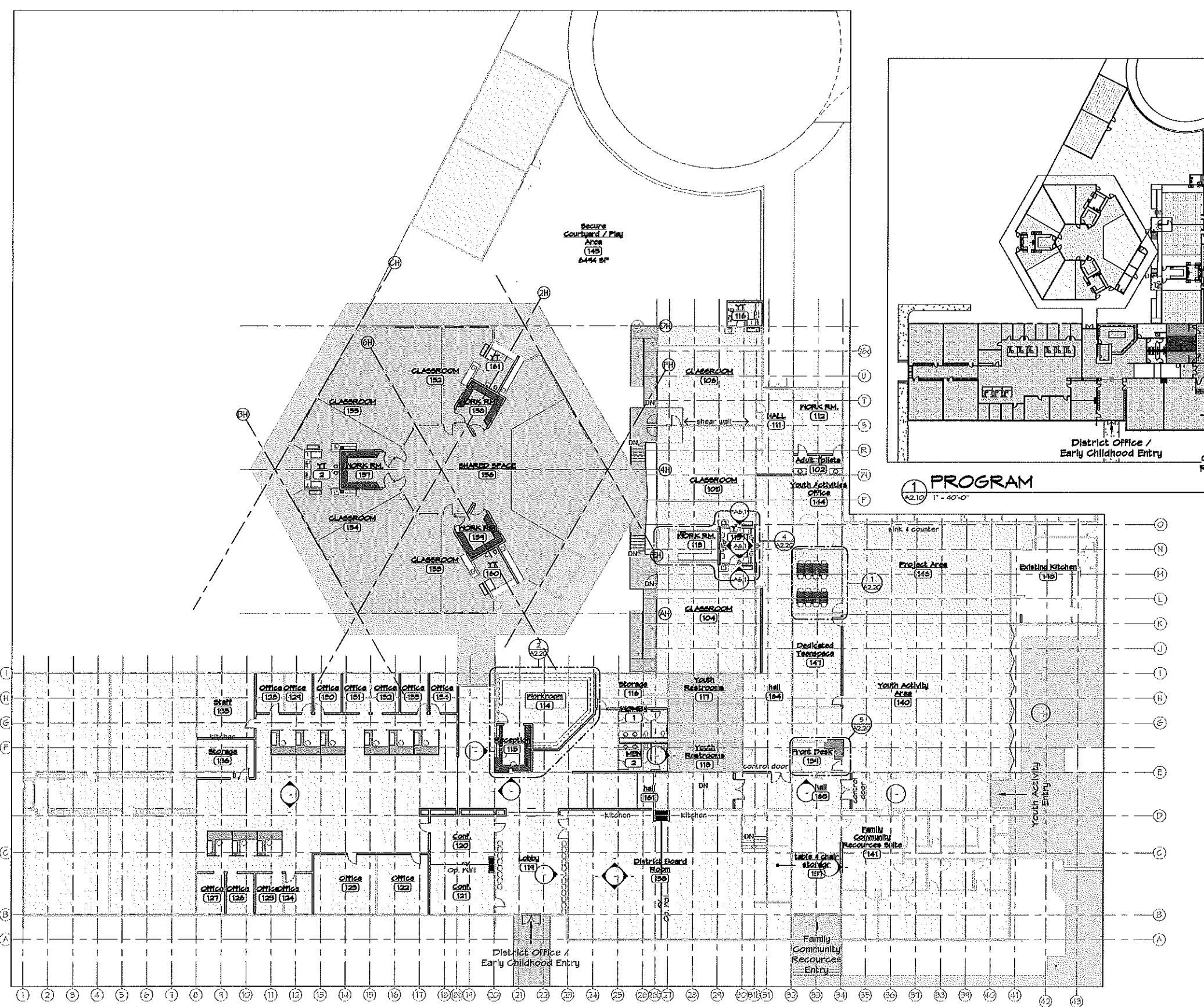
- Department Legend
- BUILDING SERVICES
 - ▨ DISTRICT OFFICES
 - EARLY CHILDHOOD EDUCATION
 - ▤ FAMILY & COMMUNITY RESOURCES
 - ▥ LOBBY
 - ▧ UNDESIGNATED
 - ▩ YOUTH ACTIVITY CENTER
 - Calculating...



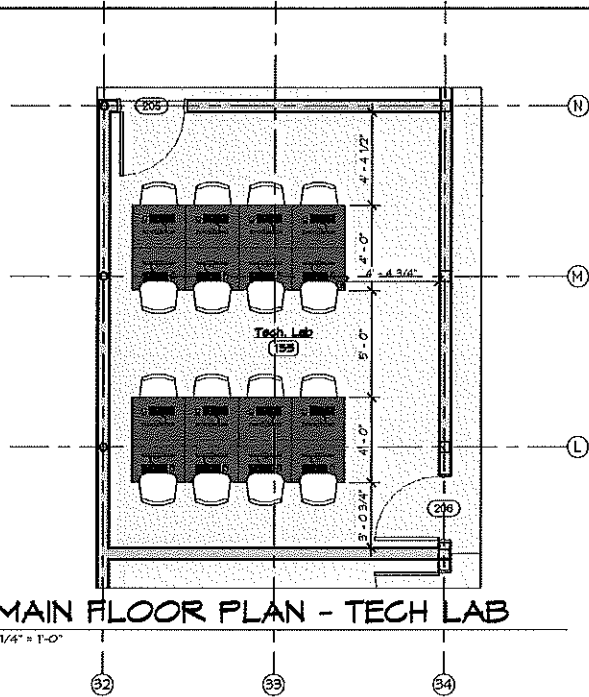
PROGRAM
A2.10 1" = 40'-0"

AREA BREAKDOWN

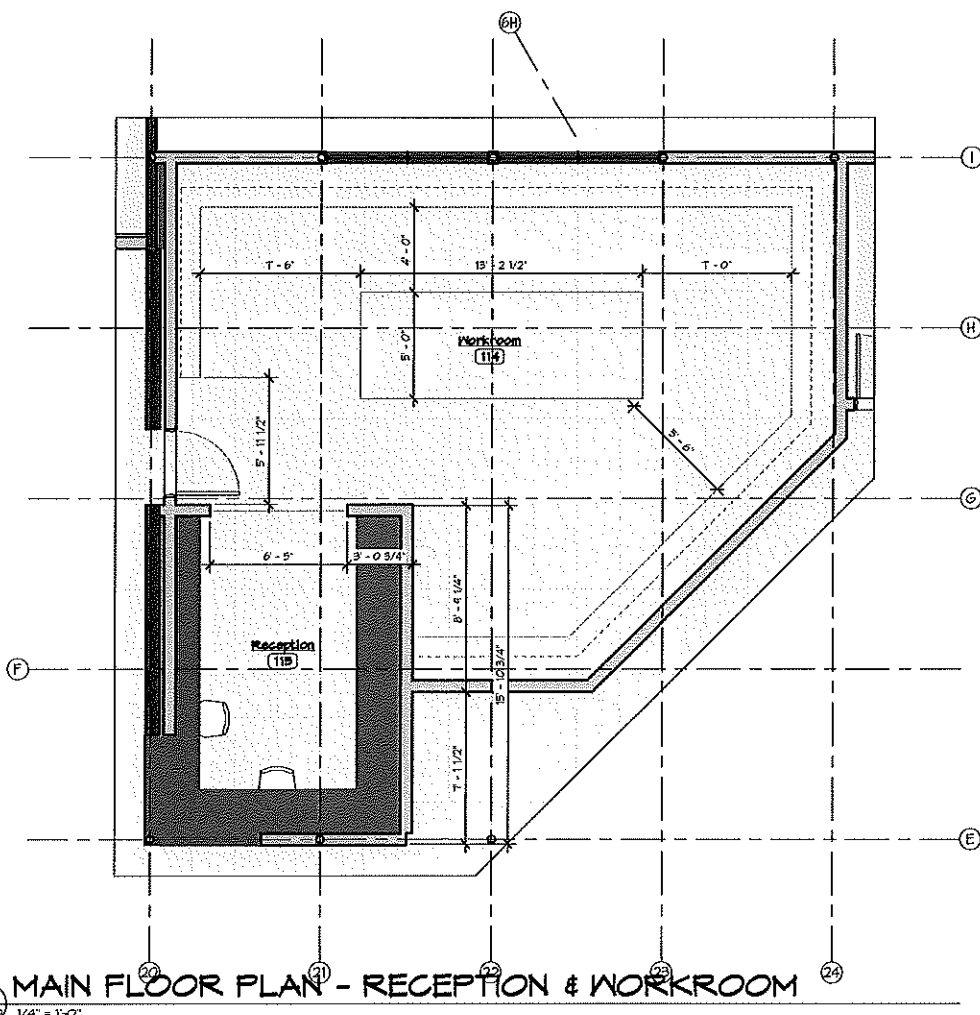
BUILDING SERVICES	264 SF
DISTRICT OFFICES	12482 SF
EARLY CHILDHOOD EDUCATION	17805 SF
FAMILY & COMMUNITY RESOURCES	3615 SF
LOBBY	754 SF
UNDESIGNATED	4138 SF
YOUTH ACTIVITY CENTER	8205 SF
TOTAL	47353 SF



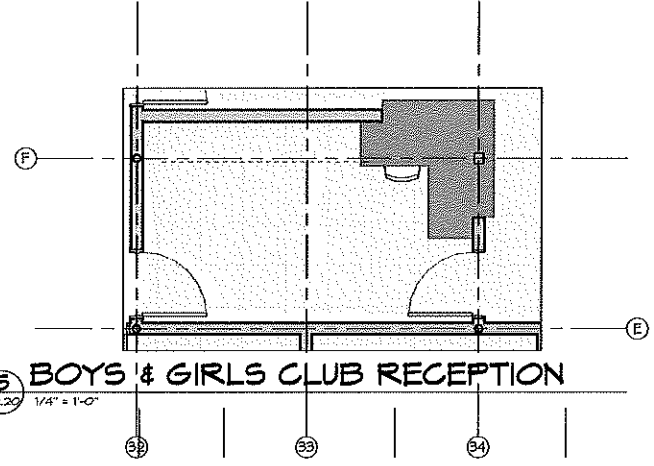
MAIN FLOOR PLAN
A2.10 1/16" = 1'-0"



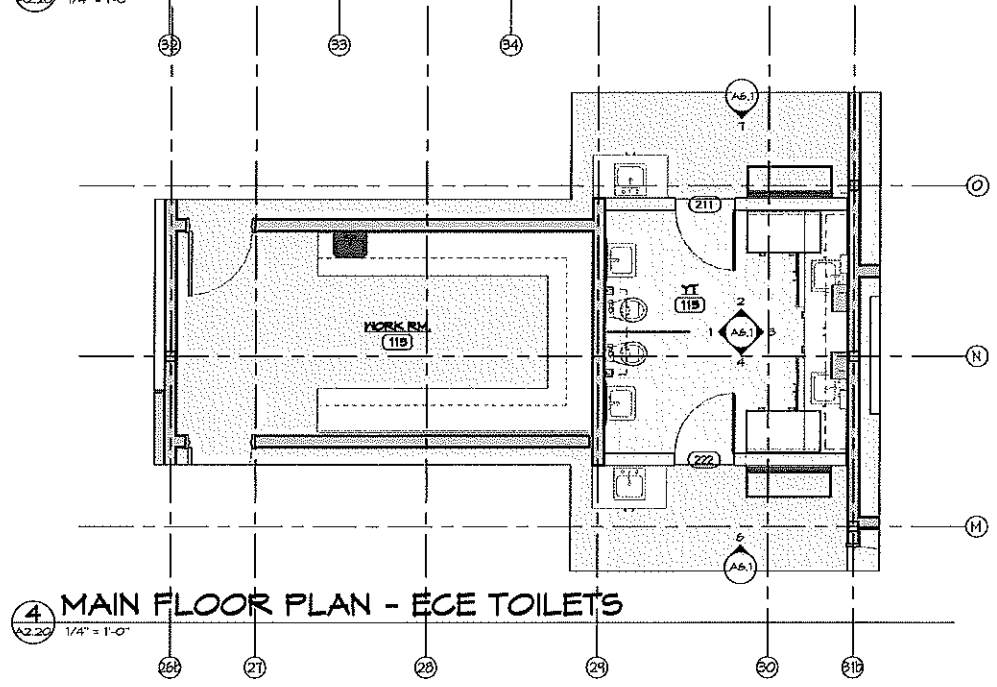
1 MAIN FLOOR PLAN - TECH LAB
 1/4" = 1'-0"



2 MAIN FLOOR PLAN - RECEPTION & WORKROOM
 1/4" = 1'-0"



5 BOYS & GIRLS CLUB RECEPTION
 1/4" = 1'-0"



4 MAIN FLOOR PLAN - ECE TOILETS
 1/4" = 1'-0"

King Architecture LLC is not responsible for safety programs, methods and procedures of operations, or the construction of the design shown on these drawings. Drawings are for use on this project only and are not intended for reuse without written approval. Drawings are not to be used in any manner that would constitute a detriment or liability directly or indirectly to King Architecture.

© COPYRIGHT 2017
 If this drawing image is less than 22 1/2" x 34 7/16", it has been reduced and must be scaled accordingly. Contractor shall verify and be responsible for all dimensions and conditions on the job. King Architecture is to be notified of any variations from the dimensions and conditions shown on the drawings, or discrepancies found within the drawings, shop drawings, etc., are to be submitted to King Architecture for review prior to fabrication and/or installation.



Lynden School District

XXXXX -
 Repurposing of
 Lynden Middle
 School

DD
 17 NOV 17

ISSUE:
 DATE ISSUED:

REVISIONS		
NO	DATE	ISSUE

MAIN FLOOR
 CALLOUTS

PROJECT NO: XXXXX
 SCALE: 1/4" = 1'-0"
 DRAWN BY: RWP
 FILE: Lynden School District Repurposing of Lynden Middle School

King Architecture LLC is not responsible for safety programs, methods and procedures of operations, or the construction of the design shown on these drawings. Drawings are for use on this project only and are not intended for reuse without written approval. Drawings are not to be used in any manner that would constitute a detriment or liability directly or indirectly to King Architecture.
© COPYRIGHT 2017
If this drawing image is less than 22 1/2" x 34 7/16", it has been reduced and must be scaled accordingly. Contractor shall verify and be responsible for all dimensions and conditions on the job. King Architecture is to be notified of any variations from the dimensions and conditions shown on the drawings, or discrepancies found within the drawings, shop drawings, etc., are to be submitted to King Architecture for review prior to fabrication and/or installation.



Lynden School District

XXXXX -
Repurposing of
Lynden Middle School

DD
17 NOV 17

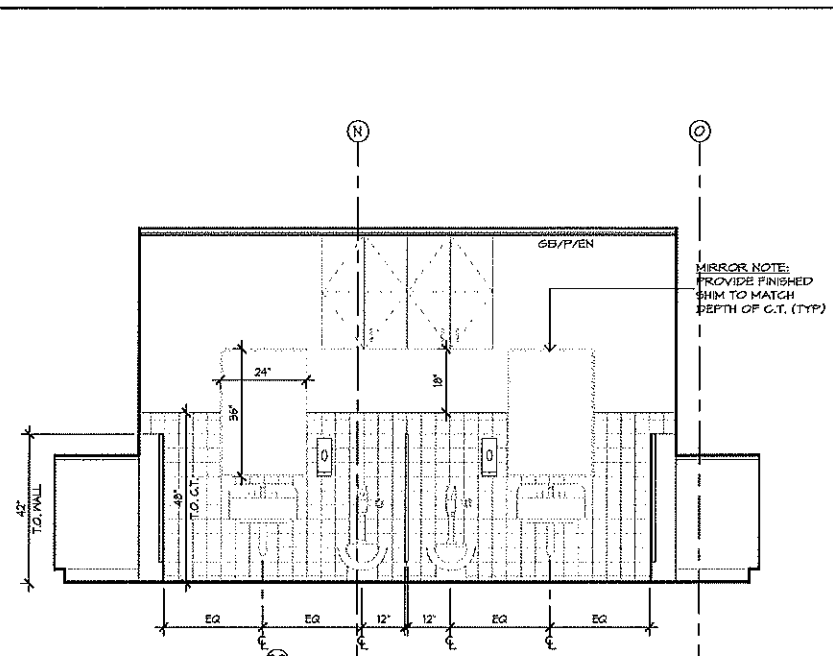
ISSUE:
DATE ISSUED:

REVISIONS		
NO	DATE	ISSUE

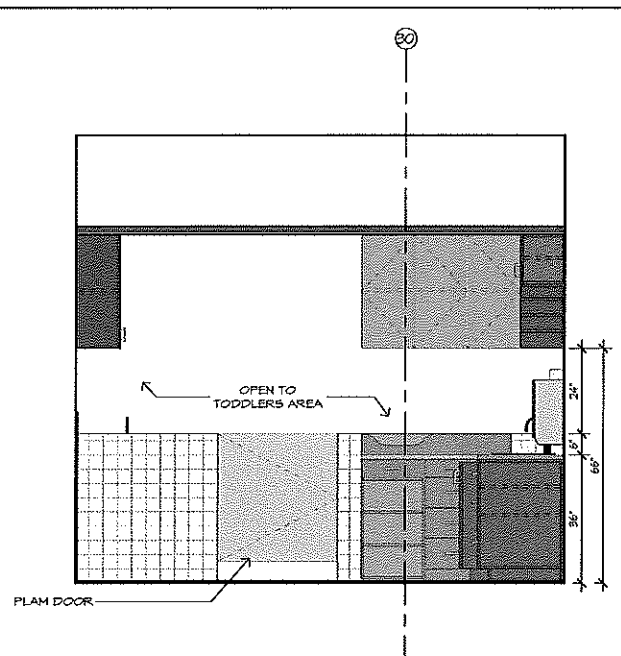
INTERIOR
ELEVATIONS

PROJECT NO: XXXXX
SCALE: 1/2" = 1'-0"
DRAWN BY: Author
FILE: Lynden School District Repurposing of Lynden Middle School

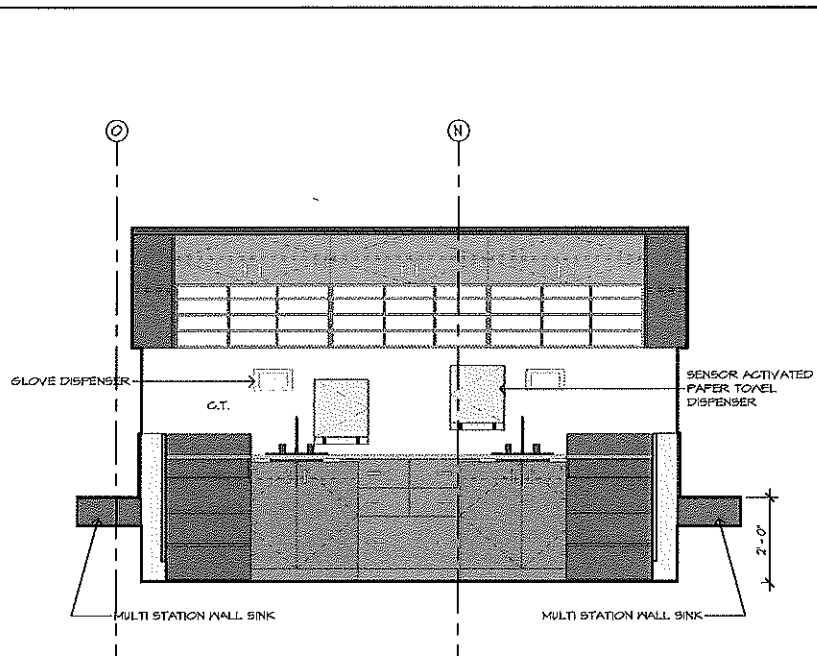
A6.1



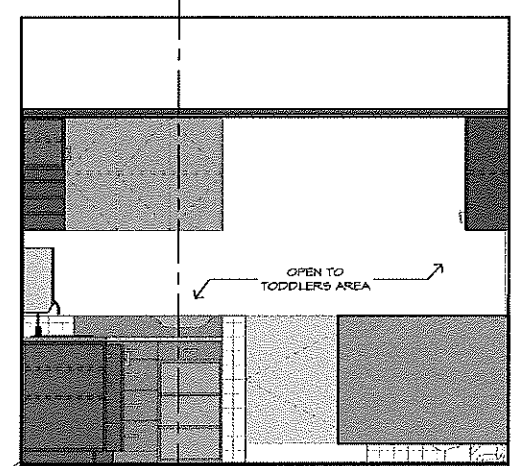
1-a
A6.1 1/2" = 1'-0"



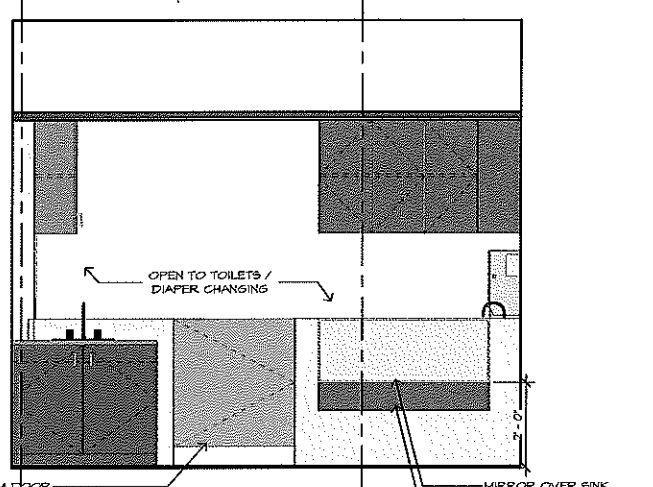
1-b
A6.1 1/2" = 1'-0"



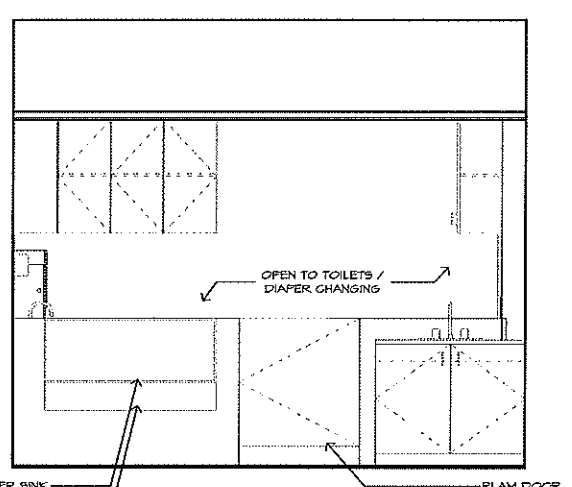
1-c
A6.1 1/2" = 1'-0"



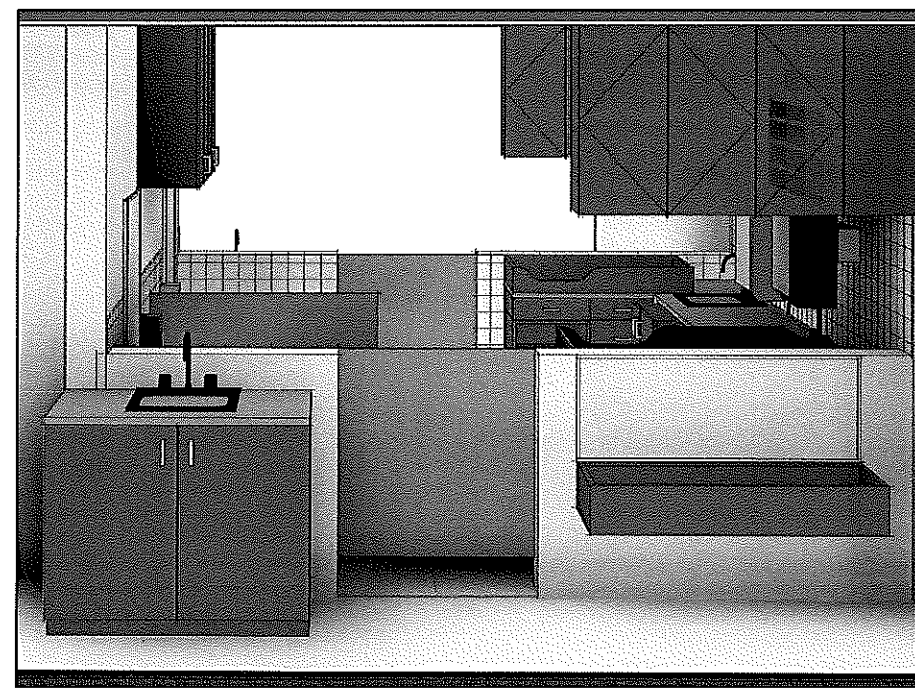
1-d
A6.1 1/2" = 1'-0"



1-d1
A6.1 1/2" = 1'-0"



1-d2
A6.1 1/2" = 1'-0"



5
A6.1 YOUTH TOILET CUTAWAY PERSPECTIVE